

# Ferintosh Community Bus S22

From 28th June 2021

Operator: Stagecoach Highland

Service available in the Ferintosh Community Council area, Monday to Friday, between the hours of: 09.30 to 16.15

For bookings phone:  
07519 722 456 / 07519 772 376

### Who is putting this pilot together?

A partnership of HITRANS, Stagecoach, The Highland Council, CSI Rossshire and Ferintosh Community Council (supported by Culbokie Community Trust) has assembled this pilot.

### Who can I contact for more information?

Your local community councillor for this pilot is Bruce Morrison who you can contact on **01349 877 127** or at **ferintoshcc30@gmail.com**



### And a BONUS for the FCC area Community

During the pilot (estimated Autumn 2021) a small 5 seater (plus wheelchair place) electric vehicle will replace the diesel Sprinter (16 seater). By then we are planning to have volunteer drivers trained, registered, PVG checked and insured to enable the FCB to be available through late afternoon into night time and also on Sundays thus providing essentially a 24/7 service (the modest fares for these volunteer services have not yet been decided). So for 7 days a week, FCC area residents will have access to all Stagecoach's A9 services at Tore Service Station. For example, for the first time, residents will be able to access evening events and activities in Inverness.

### Is the FCB Pilot just to link with A9 bus services?

Initially, yes that is the plan and the existing 21 service through the FCC area to Cromarty and Dingwall remains as a fixed route service. If the pilot goes well, a Phase 2 trial of 'demand responsive' services for journeys between Cromarty and Dingwall will be considered but only after extensive consultation.



Service No.22 Inverness - Culbokie Monday to Friday

Service Number	22A	22A	22A	22A	22A	22A	22	22	22B
Inverness Bus Station	0720	0721	0730	0731	0731	0825	0855	1440	1730
North Kessock Old Pier	-	-	-	-	-	-	-	-	1746
North Kessock Vairs Rise	-	-	-	-	-	-	-	-	1750
Artafallie	-	-	-	-	-	-	-	1448	1753
Tore Fortrose Road	-	-	-	-	-	-	-	1453	1758
Tore Layby	0730	0731	0740	0741	0835	0905	-	-	-
Easter Kirkell	-	-	-	-	-	-	-	1504	-
Culbokie Shops	0742	0743	0752	0753	0847	0917	1511	1810	-
Culbokie School Croft	0744	0745	0754	0755	0849	0919	1513	1812	-

Service No.22 Culbokie - Inverness Monday to Friday

Service Number	22A	22	22	22A	22A	22A	22A	22A	22A	22A
Culbokie School Croft	0755	0920	1406	1556	1615	1630	1638	1813	1815	-
Culbokie Shops	0757	0922	1408	1558	1617	1632	1640	1815	1817	-
Easter Kirkell	-	0929	1415	-	-	-	-	-	-	-
Tore Layby	0805	-	-	1606	1625	1640	1648	1823	1825	-
Tore Fortrose Road	-	0940	1426	-	-	-	-	-	-	-
Artafallie	-	0945	1431	-	-	-	-	-	-	-
Inverness Bus Station	0819	0953	1439	1620	1639	1654	1702	1837	1839	-

Sch - School days A - Monday to Thursday when schools are open B - Friday when schools are open. F - Fridays only NF - Not Fridays

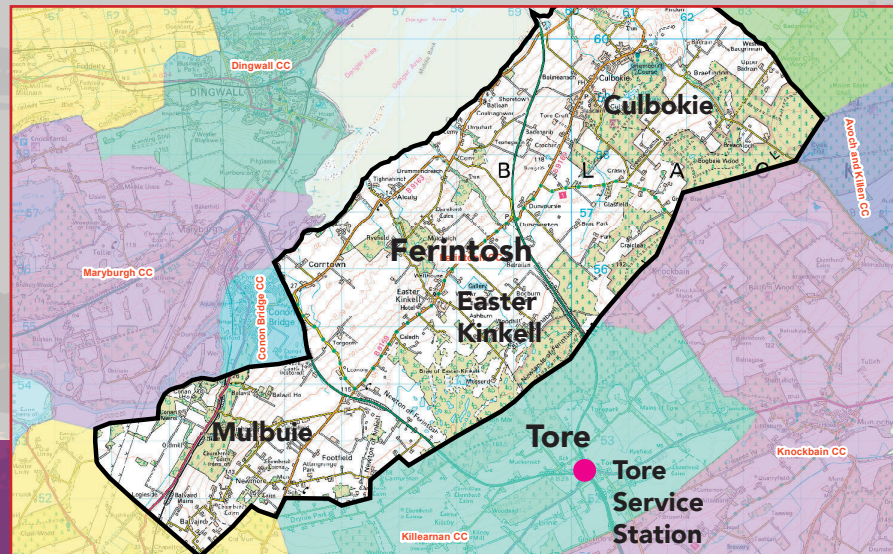
### What is the Ferintosh Community Bus (FCB)?

The FCB is a new flexible bus service for residents in the Ferintosh Community Council (FCC) area. Complementing scheduled peak services to Inverness that will continue to be operated by Stagecoach (See Service 22 timetable), the new FCB will operate between 09.30 - 16.15 and take residents to and from Tore Service Station where passengers can join any of Stagecoach's mainline A9 buses. Passengers can also book journeys between any two points within the Ferintosh area (See map below)

The FCB is an example of a demand responsive form of public bus transport (customised for the Ferintosh area) that, around the UK and beyond, is proving to provide a more accessible, more frequent and more sustainable service for rural residents. Generally, rural residents live considerable distances from fixed route bus services and the FCB can travel all the public roads as a flexible routing service. The frequency of bus journeys can therefore now be increased since the FCB will only be travelling within a small constrained area and will link with the more frequent A9 bus services operated by Stagecoach.

### Who can use it?

Just like an ordinary bus, it is available to all residents in (and visitors to) the FCC area (Culbokie in the east to Mulbuie in the west, Mulbuie Ridge in the south down to the Cromarty Firth in the north).



### Where can I travel to and from?

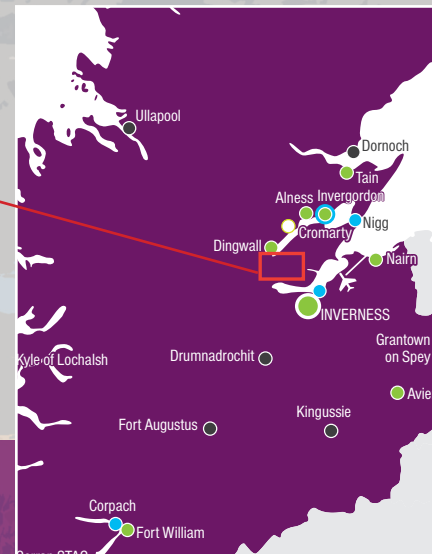
The FCB will be able to travel on all the public roads in the FCC area and collect / drop off residents anywhere where it is safe for the bus to stop and as near to your home as possible. The FCB will then link at Tore Service Station\* with all of Stagecoach's A9 bus services south into Inverness and northwards up the A9. Door to door journeys within the FCC area will also be possible.

At the Tore Service Station, the FCB will meet the A9 bus (having diverted off the A9) for passenger transfer. The FCB will plan to arrive 5 to 10 minutes before the arrival of the chosen A9 bus. Passengers will be welcome to use the café /toilet facilities at Tore Service Station or may prefer to wait on the FCB.

\*Tore Service Station is open 06.00 - 22.00 (Mon-Thurs), 06.00 - 21.00 (Fri), 07.30 - 20.00 (Sat) and 09.00 - 20.00 (Sun) Refer to the tear off timetable attached.

### When can I travel?

Stagecoach will continue to operate a peak time Service 22 timetable (refer to tear off timetable attached) while the FCB will operate between 09.30 - 16.15. The FCB can be organised to collect you in the Ferintosh area for your outward journey or from Tore Service Station for return journey between 09.30 - 16.15 Monday to Friday.



### How do I book it?

Phone at any time between 10.00 - 14.00 Monday to Friday to book at least 1 day in advance of travel (every effort will be made to accommodate same day requests). You will then agree with the administrator all the details of the agreed journeys (times and places) and provide a contact phone number. There is no requirement to explain the reason for your journey.

Block bookings for specific journeys will not be permitted to ensure all passengers have equal access to the service. However, every effort will be made to ensure that all journeys requested can be scheduled wherever possible.

### Will the bus come exactly when I want it?

Because the FCB could be carrying a small number of other residents in other parts of the FCC area, both residents and the administrator will agree a time which will then be adhered to. The FCB will collect you even if you are the only passenger.

### What is the fare?

All journeys, including concessionary travel, will be no more costly than current fixed route journeys, even although the journey to /from Inverness is a two bus journey. The National Entitlement Card can be used with this service. The cost of a bus journey is very much lower than the fuel and parking costs of a private vehicle or a taxi fare.

### Why is a demand responsive, flexible route and flexibly timed service being piloted?

The current fixed route bus service is used by a very small number of residents. Financial support for public bus services from Councils around the UK is in decline as funding is diverted towards services required by higher numbers of residents. Demand responsive bus services are proving more useful for residents in rural areas and therefore easier for Councils to justify financial support.

### Ferintosh Community Bus

Operates between any two points in the Ferintosh Community Council area and to/from Tore Service Station to connect with the services below. 09.30 - 16.15 Monday to Friday

### Timetable for Inverness -Tore - Inverness

Showing all Stagecoach buses serving Tore Service Station

#### Inverness Bus Station to Tore Service Station Monday to Friday

Time	Service Number
0857	25
0927	X25
0957	25
1027	X25
1057	25
1127	X25
1157	25
1227	X25
1257	25
1327	X25
1357	25
1427	X25
1527	X25
1557	25

#### Tore Service Station to Inverness Bus Station Monday to Friday

Time	Service Number
0904	X25
0941	25
0952	25A
1009	X25
1052	25
1104	X25
1152	25
1204	X25
1252	25
1304	X25
1352	25
1404	X25
1452	25
1504	X25
1555	X25

#### Inverness - Culbokie Saturdays

Service No.	22A	22
Inverness Bus Station	1055	1410
Artafallie	-	1418
Tore Fortrose Road	-	1423
Tore Layby	1105	-
Easter Kinkell	-	1434
Culbokie Shops	1117	1441
Culbokie School Croft	1119	1443

#### Culbokie - Inverness Saturdays

Service No.	22A	22
Culbokie School Croft	1122	1444
Culbokie Shops	1124	1446
Easter Kinkell	1131	-
Tore Layby	-	1454
Tore Fortrose Road	1142	-
Artafallie	1147	-
Inverness Bus Station	1155	1443

For bookings phone:  
07519 722 456 / 07519 772 376